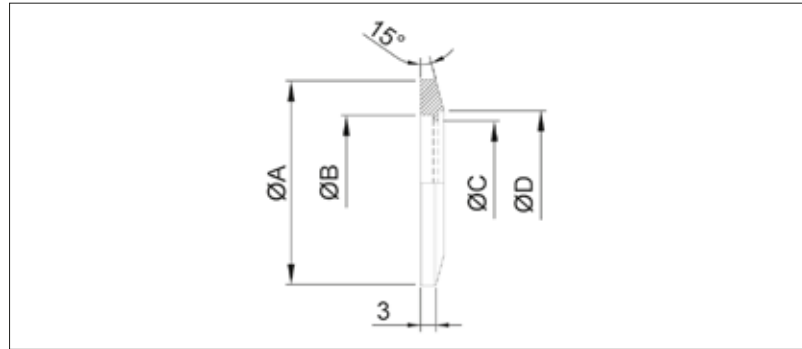


# ISO-KF Weld Ring Flange



- Pressure range:  $1 \cdot 10^8$  mbar to 1.5 bar (elastomer seal)
- $1 \cdot 10^9$  mbar to 1.5 bar 304 & 316L (metal seal)

## Dimensions



### Stainless Steel 304/1.4301

- Temperature range: -196 to 300 °C

Size (DN)	Tube Dimension (mm)	A (mm)	B (mm)	C (mm)	D (mm)	Order No
10	14X2	30	12.2	10	14	VC1FLE1SS010-14-2
10	13X1.5	30	12.2	10	13	VC1FLE1SS010-13-1
16	20X2	30	17.2	16	20	VC1FLE1SS016-20-2
16	19x1.5	30	17.2	16	19	VC1FLE1SS016-19-1
20	25X2	40	22.2	21	25	VC1FLE1SS020-25-2
20	23x1.5	40	22.2	20	23	VC1FLE1SS020-23-1
25	28X2	40	26.2	24	28	VC1FLE1SS025-28-2
25	29x1.5	40	26.2	26	29	VC1FLE1SS025-29-1
32	38X2	55	34.2	34	38	VC1FLE1SS032-38-2
32	35x1.5	55	34.2	32	35	VC1FLE1SS032-35-1
40	44.5X2	55	41.2	40.5	44.5	VC1FLE1SS040-44-2
40	41x1.5	55	41.2	38	41	VC1FLE1SS040-41-1
50	57X3.2	75	52.2	50.6	57	VC1FLE1SS050-57-3
50	53x1.5	75	52.2	50	53	VC1FLE1SS050-53-1

### Stainless Steel 316L/1.4404

- Temperature range: -196 to 350 °C

Size (DN)	Tube Dimension (mm)	A (mm)	B (mm)	C (mm)	D (mm)	Order No
10	14X2	30	12.2	10	14	VC1FLE2SS010-14-2
10	13X1.5	30	12.2	10	13	VC1FLE2SS010-13-1
16	20X2	30	17.2	16	20	VC1FLE2SS016-20-2
16	19x1.5	30	17.2	16	19	VC1FLE2SS016-19-1
20	25X2	40	22.2	21	25	VC1FLE2SS020-25-2
20	23x1.5	40	22.2	20	23	VC1FLE2SS020-23-1
25	28X2	40	26.2	24	28	VC1FLE2SS025-28-2
25	29x1.5	40	26.2	26	29	VC1FLE2SS025-29-1
32	38X2	55	34.2	34	38	VC1FLE2SS032-38-2
32	35x1.5	55	34.2	32	35	VC1FLE2SS032-35-1
40	44.5X2	55	41.2	40.5	44.5	VC1FLE2SS040-44-2
40	41x1.5	55	41.2	38	41	VC1FLE2SS040-41-1
50	57X3.2	75	52.2	50.6	57	VC1FLE2SS050-57-3
50	53x1.5	75	52.2	50	53	VC1FLE2SS050-53-1