

# CF Blanking Flange



- Pressure range:  $1 \cdot 10^{-12}$  mbar to ambient pressure
- Custom lengths available upon request
- Bake out range is up to 450°C
- Materials:

Stainless Steel 304/1.4301

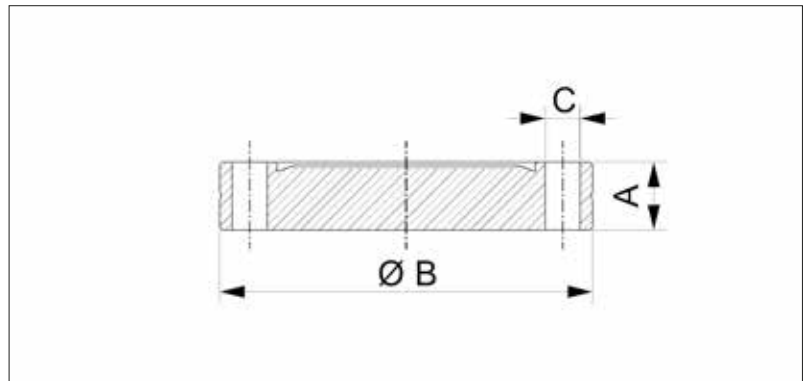
Stainless Steel 316L/1.4404

Stainless Steel 316LN ESR/1.4429

### Stainless Steel 316LN ESR/1.4429 ESU features

- Ideal for constantly dismantled chamber ports
- Electro-slag Remelt (ESR) to improve grain homogeneity and remove gross macro segregation
- Lower magnetic permeability for applications sensitive to magnetic materials ( $\mu \leq 1.005$  vs. 1.03 for 304L SS)
- Low desorption
- Bakeable under vacuum up to 1050 °C
- Pressure range:  $1 \cdot 10^{-13}$  mbar to ambient pressure

### Dimensions



### Stainless Steel 304/1.4301

- Temperature range: -196 to 300 °C

Size (DN)	A (mm)	B (mm)	C (mm)	Order No
16	7.5	34	4.4	VC4FLF1SS016
25	12	54	6.8	VC4FLF1SS025
40	13	69.9	6.8	VC4FLF1SS040
50	16.5	85.7	8.4	VC4FLF1SS050
63	17.5	113.5	8.4	VC4FLF1SS063
75	18	117.4	8.4	VC4FLF1SS075
100	20	152	8.4	VC4FLF1SS100
125	21.5	171.4	8.4	VC4FLF1SS125
160	21.5	202.4	8.4	VC4FLF1SS160
200	24.5	253.2	8.4	VC4FLF1SS200
250	24.5	304.8	8.4	VC4FLF1SS250
300	28.5	355.6	10.8	VC4FLF1SS300
350	28.5	419.1	10.8	VC4FLF1SS350

**Stainless Steel 316L/1.4404**

- Temperature range: -196 to 350 °C

Size (DN)	A (mm)	B (mm)	C (mm)	Order No
16	7.5	34	4.4	VC4FLF2SS016
25	12	54	6.8	VC4FLF2SS025
40	13	69.9	6.8	VC4FLF2SS040
50	16.5	85.7	8.4	VC4FLF2SS050
63	17.5	113.5	8.4	VC4FLF2SS063
75	18	117.4	8.4	VC4FLF2SS075
100	20	152	8.4	VC4FLF2SS100
125	21.5	171.4	8.4	VC4FLF2SS125
160	21.5	202.4	8.4	VC4FLF2SS160
200	24.5	253.2	8.4	VC4FLF2SS200
250	24.5	304.8	8.4	VC4FLF2SS250
300	28.5	355.6	10.8	VC4FLF2SS300
350	28.5	419.1	10.8	VC4FLF2SS350

**Stainless Steel 316LN ESR/1.4429 ESU**

- Temperature range: -196 to 350 °C

Size (DN)	A (mm)	B (mm)	C (mm)	Order No
16	7.5	34	4.4	VC4FLF3SS016
25	12	54	6.8	VC4FLF3SS025
40	13	69.9	6.8	VC4FLF3SS040
50	16.5	85.7	8.4	VC4FLF3SS050
63	17.5	113.5	8.4	VC4FLF3SS063
75	18	117.4	8.4	VC4FLF3SS075
100	20	152	8.4	VC4FLF3SS100
125	21.5	171.4	8.4	VC4FLF3SS125
160	21.5	202.4	8.4	VC4FLF3SS160
200	24.5	253.2	8.4	VC4FLF3SS200
250	24.5	304.8	8.4	VC4FLF3SS250
300	28.5	355.6	10.8	VC4FLF3SS300
350	28.5	419.1	10.8	VC4FLF3SS350