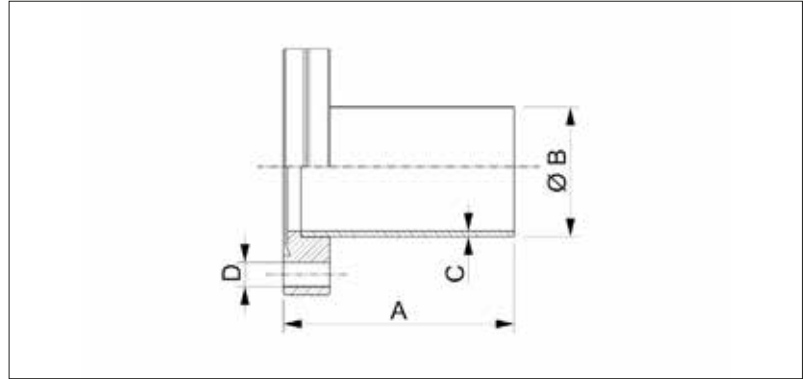


## CF Half Flange with Thread



- Flange with threaded holes
- Pressure range:  $1 \cdot 10^{-12}$  mbar to ambient pressure
- Custom lengths available upon request
- Tube surface: Glass bead blasted (polished version on request)
- Tightness:  $\leq 1 \cdot 10^{-10}$  mbar l/s
- Bake out range is up to 450°C

### Dimensions



### Stainless Steel 304/1.4301

- Temperature range: -196 to 300 °C
- Flange material: SS304 / 1.4301
- Tube material: SS304 / 1.4301

Size (DN)	Tube Dimension (mm)	A (mm)	B (mm)	C (mm)	D	Order No
16	18x1	38	18	1	M4	VC4FLB1SS016-18-38
16	19,05x1,65	38	19.05	1.65	M4	VC4FLB1SS016-19-38
25	25,4x1,65	52	25.4	1.65	M6	VC4FLB1SS025-25-52
40	38x1,5	63	38	1.5	M6	VC4FLB1SS040-38-63
40	40x1,5	63	40	1.5	M6	VC4FLB1SS040-40-63
50	50,8x1,65	82	50.8	1.65	M8	VC4FLB1SS050-50-82
63	63,5x1,65	105	63.5	1.65	M8	VC4FLB1SS063-63-105
63	70x2	105	70	2	M8	VC4FLB1SS063-70-105
75	76,1x2	90	76.1	2	M8	VC4FLB1SS075-76-90
100	101,6x2,1	135	101.6	2.1	M8	VC4FLB1SS100-101-135
100	108x2	135	108	2	M8	VC4FLB1SS100-108-135
160	154x2	167	154	2	M8	VC4FLB1SS160-154-167
160	159x2	167	159	2	M8	VC4FLB1SS160-159-167
200	203.2X2.4	200	203.2	2.4	M8	VC4FLB1SS200-203-200
200	204X2	200	204	2	M8	VC4FLB1SS200-204-200
200	205X2	200	205	2	M8	VC4FLB1SS200-205-200
250	254X2	200	254	2	M8	VC4FLB1SS250-254-200
250	256X3	200	256	3	M8	VC4FLB1SS250-256-200
300	306X3	230	306	3	M10	VC4FLB1SS300-306-230
350	356X3	230	356	3	M10	VC4FLB1SS350-356-230

### Stainless Steel 316L/1.4404

- Temperature range: -196 to 350 °C
- Flange material: SS316L / 1.4404
- Tube material: SS316L / 1.4404

Size (DN)	Tube Dimension (mm)	A (mm)	B (mm)	C (mm)	D	Order No
16	18x1	38	18	1	M4	VC4FLB2SS016-18-38
16	19,05x1,65	38	19.05	1.65	M4	VC4FLB2SS016-19-38
25	25,4x1,65	52	25.4	1.65	M6	VC4FLB2SS025-25-52
40	38x1,5	63	38	1.5	M6	VC4FLB2SS040-38-63
40	40x1,5	63	40	1.5	M6	VC4FLB2SS040-40-63
50	50,8x1,65	82	50.8	1.65	M8	VC4FLB2SS050-50-82
63	63,5x1,65	105	63.5	1.65	M8	VC4FLB2SS063-63-105
63	70x2	105	70	2	M8	VC4FLB2SS063-70-105
75	76,1x2	90	76.1	2	M8	VC4FLB2SS075-76-90
100	101,6x2,1	135	101.6	2.1	M8	VC4FLB2SS100-101-135
100	108x2	135	108	2	M8	VC4FLB2SS100-108-135
160	154x2	167	154	2	M8	VC4FLB2SS160-154-167
160	159x2	167	159	2	M8	VC4FLB2SS160-159-167
200	203.2X2.4	200	203.2	2.4	M8	VC4FLB2SS200-203-200
200	204X2	200	204	2	M8	VC4FLB2SS200-204-200
200	205X2	200	205	2	M8	VC4FLB2SS200-205-200
250	254X2	200	254	2	M8	VC4FLB2SS250-254-200
250	256X3	200	256	3	M8	VC4FLB2SS250-256-200
300	306X3	230	306	3	M10	VC4FLB2SS300-306-230
350	356X3	230	356	3	M10	VC4FLB2SS350-356-230