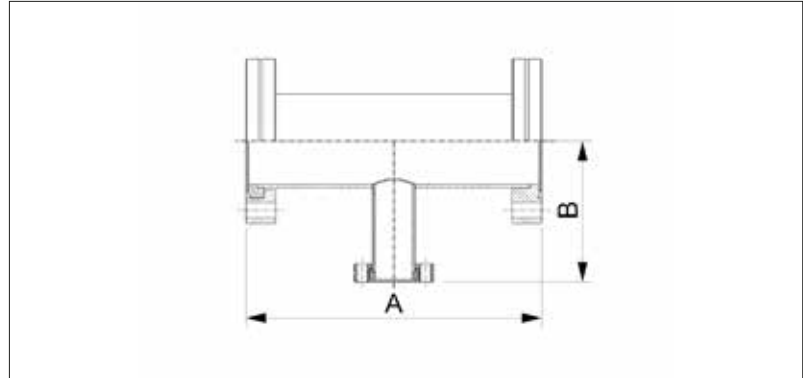


CF Reducer Tee



- One fixed and two rotatable (one on each axis) flanges
- Pressure range: $1 \cdot 10^{-12}$ mbar to ambient pressure
- Custom lengths available upon request
- Tube surface: Glass bead blasted (polished version on request)
- Tightness: $\leq 1 \cdot 10^{-10}$ mbar l/s
- Bake out range is up to 450°C

Dimensions



Stainless Steel 304/1.4301

- Temperature range: -196 to 300 °C
- Flange material: SS304 / 1.4301
- Tube material: SS304 / 1.4301

Flange Size (DN)	Reducer Flange Size (DN)	A (mm)	B (mm)	Order No
40	16	126	60	VC4FTC1SS040-016-126
63	40	210	77	VC4FTC1SS063-040-210
100	40	270	95	VC4FTC1SS100-040-270
100	63	270	95	VC4FTC1SS100-063-270
160	40	334	120	VC4FTC1SS160-040-334
160	63	334	120	VC4FTC1SS160-063-334
160	100	334	120	VC4FTC1SS160-100-334

Stainless Steel 316L/1.4404

- Temperature range: -196 to 350 °C
- Flange material: SS316L / 1.4404
- Tube material: SS316L / 1.4404

Flange Size (DN)	Reducer Flange Size (DN)	A (mm)	B (mm)	Order No
40	16	126	60	VC4FTC2SS040-016-126
63	40	210	77	VC4FTC2SS063-040-210
100	40	270	95	VC4FTC2SS100-040-270
100	63	270	95	VC4FTC2SS100-063-270
160	40	334	120	VC4FTC2SS160-040-334
160	63	334	120	VC4FTC2SS160-063-334
160	100	334	120	VC4FTC2SS160-100-334