

# CF Spacer Flange

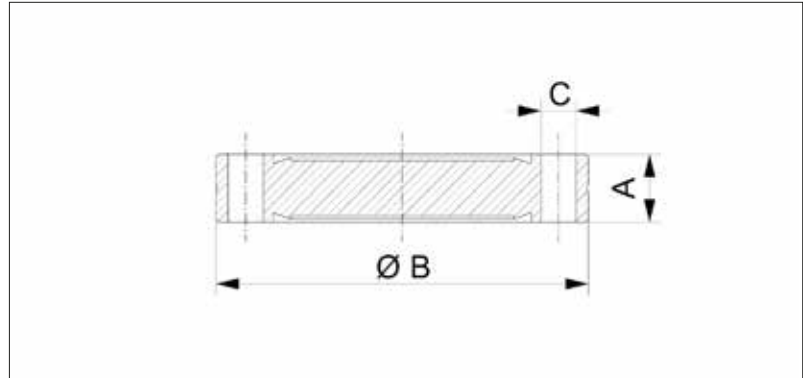


- Pressure range:  $1 \cdot 10^{-12}$  mbar to ambient pressure
- Custom lengths available upon request
- Bake out range is up to 450°C
- Materials:

Stainless Steel 304/1.4301

Stainless Steel 316L/1.4404

## Dimensions



### Stainless Steel 304/1.4301

- Temperature range: -196 to 300 °C

Size (DN)	A (mm)	B (mm)	C (mm)	Order No
16	7.5	34	4.4	VC4FLM1SS016
40	13	69.9	6.6	VC4FLM1SS040
63	17.5	113.5	8.4	VC4FLM1SS063
100	20	152	8.4	VC4FLM1SS100
160	21.5	202.4	8.4	VC4FLM1SS160

### Stainless Steel 316L/1.4404

- Temperature range: -196 to 350 °C

Size (DN)	A (mm)	B (mm)	C (mm)	Order No
16	7.5	34	4.4	VC4FLM2SS016
40	13	69.9	6.6	VC4FLM2SS040
63	17.5	113.5	8.4	VC4FLM2SS063
100	20	152	8.4	VC4FLM2SS100
160	21.5	202.4	8.4	VC4FLM2SS160