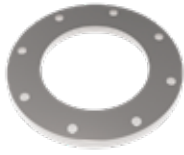
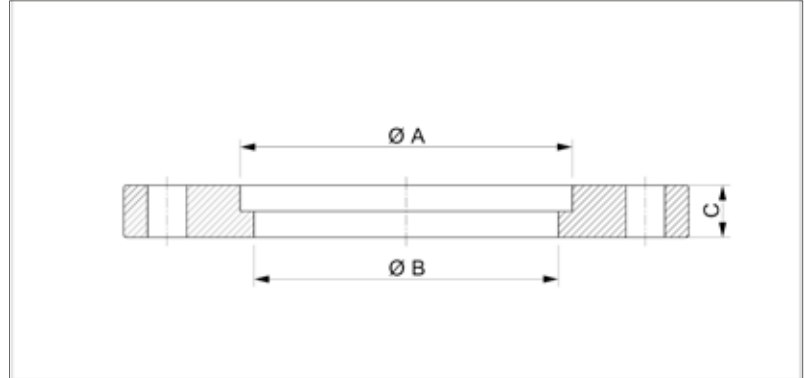


ISO-F Weld Ring Flange



- Pressure range: $1 \cdot 10^{-8}$ mbar to 1.5 bar (elastomer seal)
 $1 \cdot 10^{-9}$ mbar to 1.5 bar (metal seal)
- Materials:
Stainless Steel 304/1.4301
Stainless Steel 316L/1.4404

Dimensions



Stainless Steel 304/1.4301

- Temperature range: -196 to 300 °C

Size (DN)	Tube Dimension (mm)	A (mm)	B (mm)	C (mm)	Order No
63	76,1x3	76.4	70	12	VC3FLB1SS063-76
100	108x3	108.3	102	12	VC3FLB1SS100-108
160	159x3	159.3	153	16	VC3FLB1SS160-159
200	219x3	219.4	213	16	VC3FLB1SS200-219
250	273x3	273.4	261	16	VC3FLB1SS250-273

Stainless Steel 316L/1.4404

- Temperature range: -196 to 350 °C

Size (DN)	Tube Dimension (mm)	A (mm)	B (mm)	C (mm)	Order No
63	76,1x3	76.4	70	12	VC3FLB2SS063-76
100	108x3	108.3	102	12	VC3FLB2SS100-108
160	159x3	159.3	153	16	VC3FLB2SS160-159
200	219x3	219.4	213	16	VC3FLB2SS200-219
250	273x3	273.4	261	16	VC3FLB2SS250-273