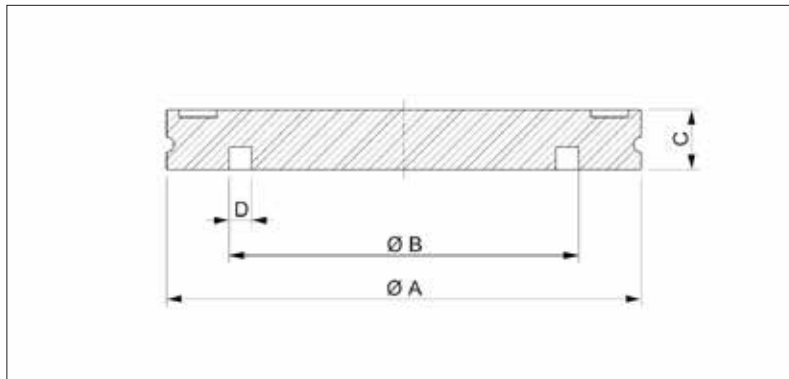


ISO-K Blanking Flange



- Pressure range: $1 \cdot 10^{-8}$ mbar to 1.5 bar (elastomer seal)
 $1 \cdot 10^{-9}$ mbar to 1.5 bar (metal seal)
- Custom lengths available upon request

Dimensions



Stainless Steel 304/1.4301

- Temperature range: -196 to 300 °C

Size (DN)	A (mm)	B (mm)	C (mm)	D (mm)	Order No
63	95	70	12	4.5	VC2FLC1SS063
80	110	83	12	4.5	VC2FLC1SS080
100	130	102	12	4.5	VC2FLC1SS100
160	180	153	12	4.5	VC2FLC1SS160
200	240	213	12	4.5	VC2FLC1SS200
250	290	261	12	4.5	VC2FLC1SS250
320	370	318	17	4.5	VC2FLC1SS320
400	450	400	17	4.5	VC2FLC1SS400
500	550	501	17	4.5	VC2FLC1SS500
630	690	651	22	4.5	VC2FLC1SS630

Stainless Steel 316L/1.4404

- Temperature range: -196 to 350 °C

Size (DN)	A (mm)	B (mm)	C (mm)	D (mm)	Order No
63	95	70	12	4.5	VC2FLC2SS063
80	110	83	12	4.5	VC2FLC2SS080
100	130	102	12	4.5	VC2FLC2SS100
160	180	153	12	4.5	VC2FLC2SS160
200	240	213	12	4.5	VC2FLC2SS200
250	290	261	12	4.5	VC2FLC2SS250
320	370	318	17	4.5	VC2FLC2SS320
400	450	400	17	4.5	VC2FLC2SS400
500	550	501	17	4.5	VC2FLC2SS500
630	690	651	22	4.5	VC2FLC2SS630