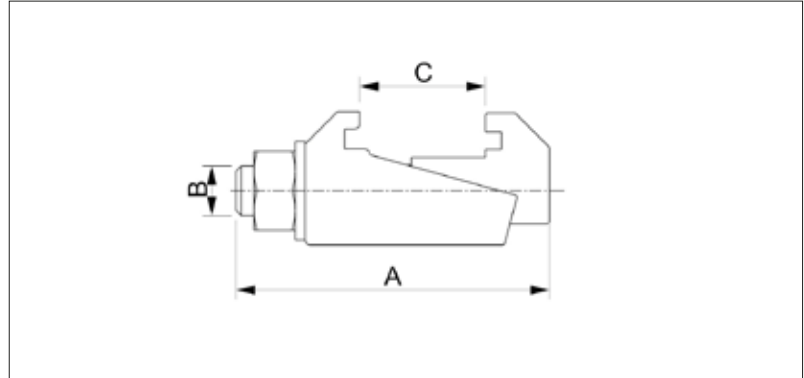


# ISO-K Claw Clamp Casting



- Suitable for use with elastomer seals and metal seals
- Aluminum version: Suitable for use with elastomer seals
- For installing on a base plate with ISO-K centering ring
- Bolt: A2-70 stainless steel
- Do not use in turbo pump assembly
- Torque (max)  
DN63-250: 16 Nm, DN320-630: 26 Nm
- Pressure Range: Elastomer seal:  $10^{-7}$  mbar to 2.5 bar

## Dimensions



### Stainless Steel 304/1.4301

- Temperature range: -196 to 300 °C

Size (DN)	A (mm)	B (mm)	C (mm)	Order No
63-250	61.5	M10	17 mm- 27 mm	VC2CLC1SS250
320-500	75	M12	27 mm- 33 mm	VC2CLC1SS500
630	86	M12	36 mm- 44 mm	VC2CLC1SS630

### Stainless Steel 316L/1.4404

- Temperature range: -196 to 350 °C

Size (DN)	A (mm)	B (mm)	C (mm)	Order No
63-250	61.5	M10	15 mm- 27 mm	VC2CLC2SS250
320-500	75	M12	27 mm- 33 mm	VC2CLC2SS500
630	86	M12	36 mm- 44 mm	VC2CLC2SS630