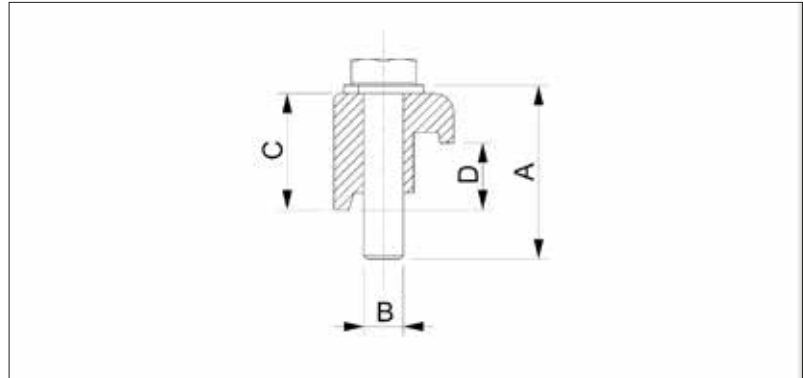


ISO-K Claw Clamp



- Suitable for use with elastomer seals and metal seals
- Aluminum version: Suitable for use with elastomer seals
- For installing on a base plate with ISO-K centering ring
- Bolt: A2-70 stainless steel
- Do not use in turbo pump assembly
- Torque (max)
DN63-250: 16 Nm, DN320-630: 26 Nm
- Pressure Range: Elastomer seal: 10^{-7} mbar to 2.5 bar

Dimensions



Aluminium EN AW-6082 T6/3.2315

- Temperature Range: -196 to 150 °C

Size (DN)	A (mm)	B (mm)	C (mm)	D (mm)	Order No
63-100	35	M8	23	14	VC2CLB1AL100
160-250	35	M10	23	14	VC2CLB1AL250
320-500	50	M12	30	21	VC2CLB1AL500

Stainless Steel 304/1.4301

- Temperature range: -196 to 300 °C

Size (DN)	A (mm)	B (mm)	C (mm)	D (mm)	Order No
63-100	35	M8	23	14	VC2CLB1SS100
160-250	35	M10	23	14	VC2CLB1SS250
320-500	50	M12	30	21	VC2CLB1SS500

Stainless Steel 316L/1.4404

- Temperature range: -196 to 350 °C

Size (DN)	A (mm)	B (mm)	C (mm)	D (mm)	Order No
63-100	35	M8	23	14	VC2CLB2SS100
160-250	35	M10	23	14	VC2CLB2SS250
320-500	50	M12	30	21	VC2CLB2SS500