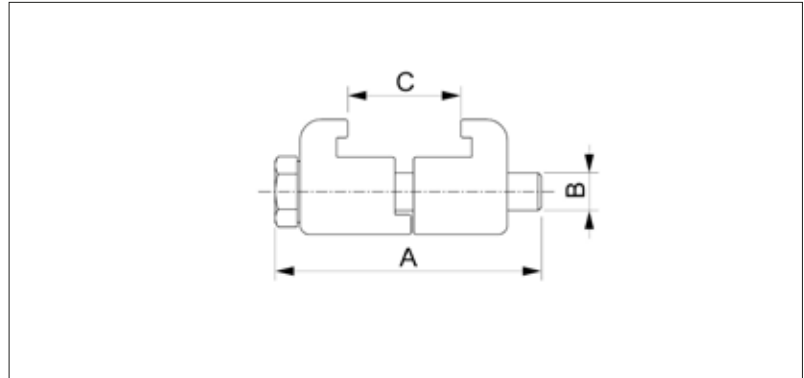


# ISO-K Double Claw Clamp



- Suitable for use with elastomer seals
- Bolt: A2-70 stainless steel
- Do not use in turbo pump assembly
- Torque (max)  
DN63-250: 16 Nm, DN320-630: 26 Nm
- Pressure Range: Elastomer seal:  $10^{-7}$  mbar to 2.5 bar

## Dimensions



### Aluminium EN AW-6082 T6/3.2315

- Temperature Range: -196 to 150 °C

Size (DN)	A (mm)	B	C (mm)	Order No
63-100	50	M8	24 mm- 27 mm	VC2CLA1AL100
160-250	52	M10	27 mm- 32 mm	VC2CLA1AL250
320-500	75	M12	32 mm- 38 mm	VC2CLA1AL500

### Stainless Steel 304/1.4301

- Temperature range: -196 to 300 °C

Size (DN)	A (mm)	B	C (mm)	Order No
63-250	61.5	M10	15 mm- 27 mm	VC2CLA1SS250
320-500	75	M12	27 mm- 33 mm	VC2CLA1SS500
630	85	M12	36 mm- 44 mm	VC2CLA1SS630

### Stainless Steel 316L/1.4404

- Temperature range: -196 to 350 °C

Size (DN)	A (mm)	B	C (mm)	Order No
63-250	61.5	M10	15 mm- 27 mm	VC2CLA2SS250
320-500	75	M12	27 mm- 33 mm	VC2CLA2SS500
630	85	M12	36 mm- 44 mm	VC2CLA2SS630