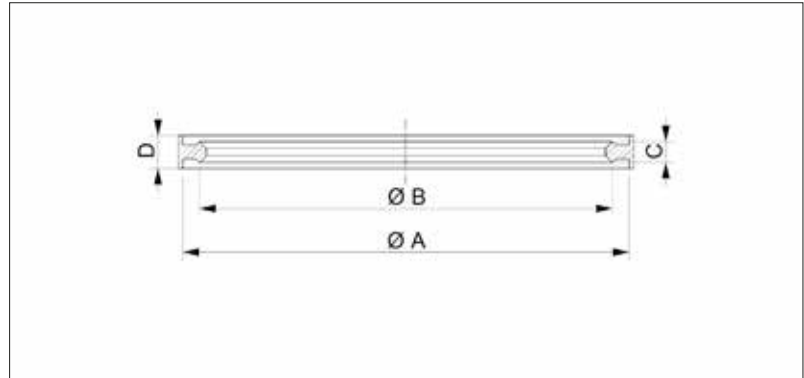


ISO-K Edge Seal Outer Centered



- No gas permeation
- Cryo, Radiation tolerant and nuclear application
- Clean room application compatible
- For stainless steel flanges
- Fastener: ISO-K Claw Clamp for Metal Seals
- For single use only
- Material:
Aluminium EN AW-1050
Copper

Dimensions



Aluminium EN AW-1050

- Temperature Range: -196 to 150 C°

Size (DN)	A (mm)	B (mm)	C (mm)	D (mm)	Order No
63	95	88	4.5	7	VC2SLD2AL063
80	110	103	4.5	7	VC2SLD2AL080
100	130	123	4.5	7	VC2SLD2AL100
160	180	173	4.5	7	VC2SLD2AL160
200	240	233	4.5	7	VC2SLD2AL200
250	290	283	4.5	7	VC2SLD2AL250

Copper

- Temperature Range: -196 to 200 C°

Size (DN)	A (mm)	B (mm)	C (mm)	D (mm)	Order No
63	95	88	4.5	7	VC2SLD1CU063
80	110	103	4.5	7	VC2SLD1CU080
100	130	123	4.5	7	VC2SLD1CU100
160	180	173	4.5	7	VC2SLD1CU160
200	240	233	4.5	7	VC2SLD1CU200
250	290	283	4.5	7	VC2SLD1CU250