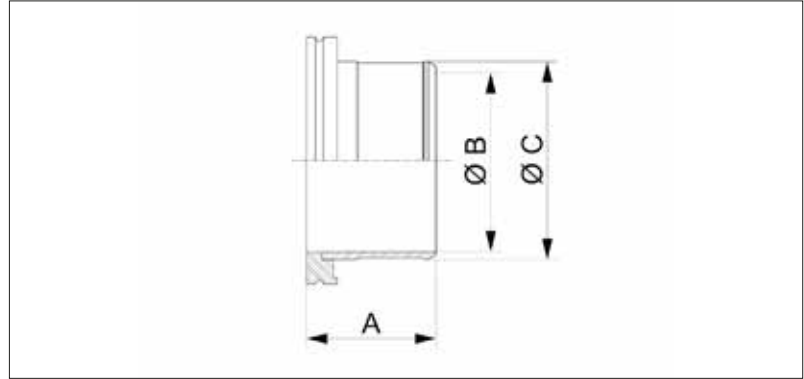


# ISO-K Hose Adapter



- Materials:  
Stainless Steel 304/1.4301  
Stainless Steel 316L/1.4404
- For connecting a PVC hose or a CR sleeve

## Dimensions



### Stainless Steel 304/1.4301

- Temperature range: -196 to 300 °C

Flange Size (DN)	A (mm)	B (mm)	C (mm)	Order No
63	50	70	76.1	VC2ADB1SS063-50
100	50	95	101.6	VC2ADB1SS100-50

### Stainless Steel 316L/1.4404

- Temperature range: -196 to 350 °C

Flange Size (DN)	A (mm)	B (mm)	C (mm)	Order No
63	50	70	76.1	VC2ADB2SS063-50
100	50	95	101.6	VC2ADB2SS100-50