

ISO-K to KF Reducer Tee



- Materials:

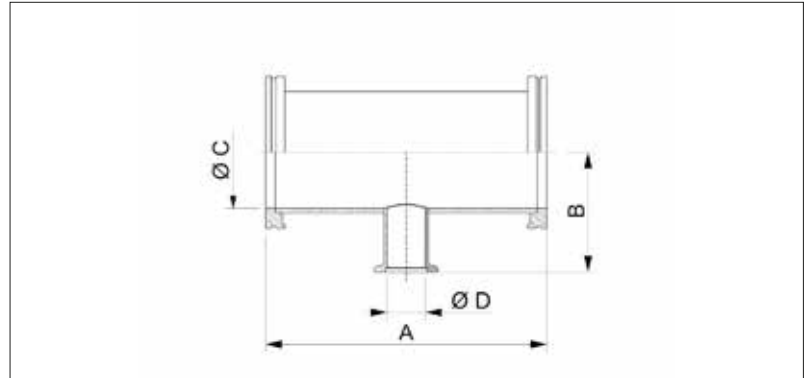
Stainless Steel 304/1.4301

Stainless Steel 316L/1.4404

- Pressure range: $1 \cdot 10^{-8}$ mbar to 500 mbar over pressure (elastomer seal)

- $1 \cdot 10^{-9}$ mbar to 500 mbar over pressure (metal seal)

Dimensions



Stainless Steel 304/1.4301

- Temperature range: -196 to 300 °C

| Flange Size (DN) | Reducer Flange Size (DN) | A (mm) | B (mm) | C (mm) | D (mm) | Order No |
|------------------|--------------------------|--------|--------|--------|--------|----------------------|
| 63 | 25 | 176 | 75 | 70 | 24 | VC2FTE1SS063-025-176 |
| 63 | 40 | 176 | 75 | 70 | 40.5 | VC2FTE1SS063-040-176 |
| 100 | 25 | 216 | 100 | 102 | 24 | VC2FTE1SS100-025-216 |
| 100 | 40 | 216 | 100 | 102 | 40.5 | VC2FTE1SS100-040-216 |
| 160 | 25 | 276 | 125 | 153 | 24 | VC2FTE1SS160-025-276 |
| 160 | 40 | 276 | 125 | 153 | 40.5 | VC2FTE1SS160-040-276 |

Stainless Steel 316L/1.4404

- Temperature range: -196 to 350 °C

| Flange Size (DN) | Reducer Flange Size (DN) | A (mm) | B (mm) | C (mm) | D (mm) | Order No |
|------------------|--------------------------|--------|--------|--------|--------|----------------------|
| 63 | 25 | 176 | 75 | 70 | 24 | VC2FTE2SS063-025-176 |
| 63 | 40 | 176 | 75 | 70 | 40.5 | VC2FTE2SS063-040-176 |
| 100 | 25 | 216 | 100 | 102 | 24 | VC2FTE2SS100-025-216 |
| 100 | 40 | 216 | 100 | 102 | 40.5 | VC2FTE2SS100-040-216 |
| 160 | 25 | 276 | 125 | 153 | 24 | VC2FTE2SS160-025-276 |
| 160 | 40 | 276 | 125 | 153 | 40.5 | VC2FTE2SS160-040-276 |