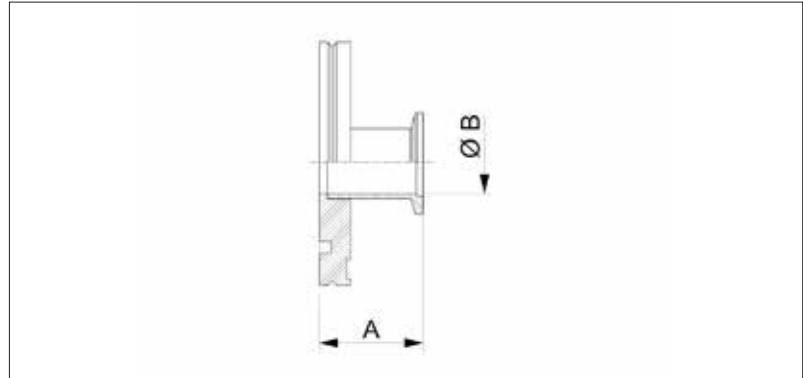


ISO-K to KF Straight Adapter



- Other nominal diameters and dimensions on request
- Pressure range: $1 \cdot 10^{-8}$ mbar to ambient pressure (elastomer seal)
 $1 \cdot 10^{-9}$ mbar to ambient pressure (metal seal)
- Materials:
Stainless Steel 304/1.4301
Stainless Steel 316/1.4404

Dimensions



Stainless Steel 304/1.4301

- Temperature range: -196 to 300 °C

Flange Size (DN)	Reducer Flange Size (DN)	A (mm)	B (mm)	Order No
63	25	40	24	VC2ADD1SS063-025-40
63	40	40	40.5	VC2ADD1SS063-040-40
63	50	40	50.6	VC2ADD1SS063-050-40
100	25	40	24	VC2ADD1SS100-025-40
100	40	40	40.5	VC2ADD1SS100-040-40
100	50	40	50.6	VC2ADD1SS100-050-40
160	40	40	40.5	VC2ADD1SS160-040-40
160	50	40	50.6	VC2ADD1SS160-050-40
160	63	40	70	VC2ADD1SS160-063-40

Stainless Steel 316L/1.4404

- Temperature range: -196 to 350 °C

Flange Size (DN)	Reducer Flange Size (DN)	A (mm)	B (mm)	Order No
63	25	40	24	VC2ADD2SS063-025-40
63	40	40	40.5	VC2ADD2SS063-040-40
63	50	40	50.6	VC2ADD2SS063-050-40
100	25	40	24	VC2ADD2SS100-025-40
100	40	40	40.5	VC2ADD2SS100-040-40
100	50	40	50.6	VC2ADD2SS100-050-40
160	40	40	40.5	VC2ADD2SS160-040-40
160	50	40	50.6	VC2ADD2SS160-050-40
160	63	40	70	VC2ADD2SS160-063-40