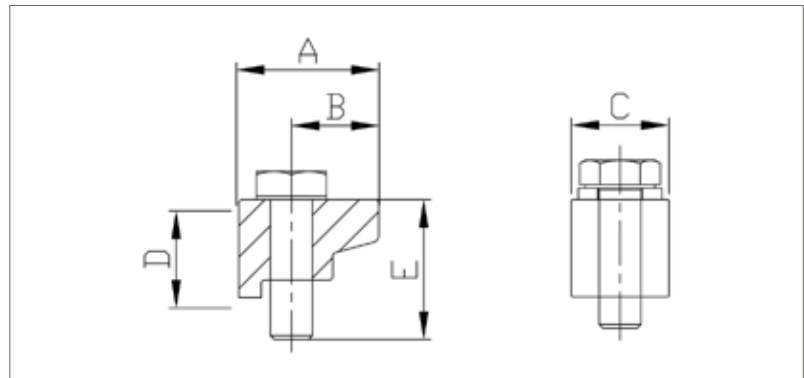


ISO-KF Claw (Wall) Clamp



- Suitable for use with elastomer seals
- For installing on a base plate with KF centering ring
- Aluminium body, stainless steel bolt.
- Cast steel
- Short and long versions available
- Spring loaded lock-washers, single Claw Clamp for bolting KF flanges to bulkheads
- Can be used instead of bulkhead clamps
- Wide range optimised for many applications
- Holes: Needed number of tapped holes in base plate: 4x90° (Thread: M6, depth: min. 6 mm)
- Material: Aluminium (EN AW-6082 T6)
Bolt: A2-70 stainless steel (Hexagon Head, M6 x 20 mm)
- Pressure Range
Elastomer seal: 10⁻⁷ mbar to 2.5 bar
Torque max 8 Nm

Dimensions



Aluminium EN AW-6082/3.2315

- Temperature Range: -196 to 200 C°

Size (DN)	A (mm)	B (mm)	C (mm)	D (mm)	E (mm)	Order No
10/50	20	12.5	14	14	20	VC1CLF1AL050

Stainless Steel 304/1.4301

- Temperature range: -196 to 300 °C

Size (DN)	A (mm)	B (mm)	C (mm)	D (mm)	E (mm)	Order No
10/50	20	12.5	14	14	20	VC1CLF1SS050

Stainless Steel 316L/1.4404

- Temperature range: -196 to 350 °C

Size (DN)	A (mm)	B (mm)	C (mm)	D (mm)	E (mm)	Order No
10/50	20	12.5	14	14	20	VC1CLF2SS050