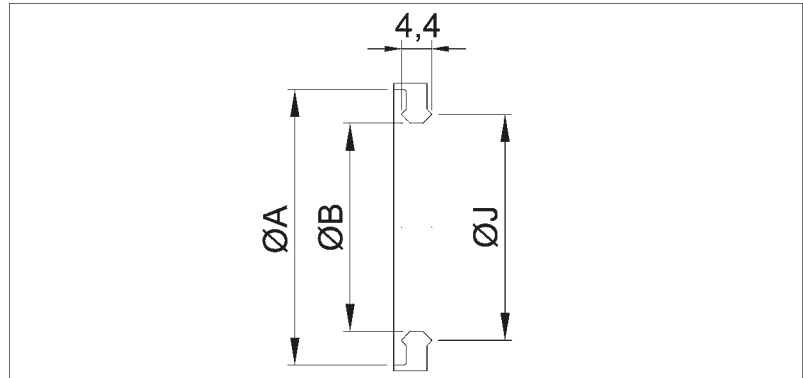


ISO-KF Edge Seal One-Side Outer Centered



- No gas permeation
- Cryo, radiation tolerant and nuclear application
- Clean room application compatible
- For stainless steel flanges
- Fastener: ISO-KF Clamp for metal seals
- For single use only

Dimensions



Aluminium EN AW-1050

- Temperature Range: -196 to 150 C°

Size (DN)	A (mm)	B (mm)	J (mm)	Order No
10/16	30	20	23	VC1SLG2AL016
20/25	40	32	33	VC1SLG2AL025
32/40	55	45	48	VC1SLG2AL040
50	75	65	68	VC1SLG2AL050

Copper

- Temperature Range: -196 to 200 C°

Size (DN)	A (mm)	B (mm)	J (mm)	Order No
10/16	30	20	23	VC1SLG1CU016
20/25	40	32	33	VC1SLG1CU025
32/40	55	45	48	VC1SLG1CU040
50	75	65	68	VC1SLG1CU050