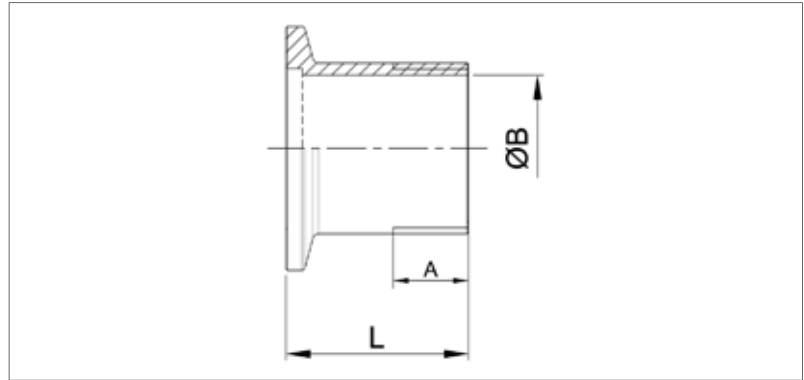


ISO-KF Flange With Pipe Thread Male



- Material:
Stainless Steel 304/1.4301
Stainless Steel 316L/1.4404

Dimensions



Stainless Steel 304/1.4301

- Temperature range: -196 to 300 °C

Size (DN)	A (mm)	B (mm)	L (mm)	Thread	Order No
10	12	10	30	G3/8	VC1ADC1SS010-04-30
16	9	9	30	G1/4	VC1ADC1SS016-03-30
16	12	16	30	G1/2	VC1ADC1SS016-05-30
16	12	16	30	G3/8	VC1ADC1SS016-04-30
25	12	16	30	G1/2	VC1ADC1SS025-05-30
25	12	20	30	G3/4	VC1ADC1SS025-07-30
25	12	24	30	G1	VC1ADC1SS025-09-30
40	14	35	30	G1.25	VC1ADC1SS040-11-30
40	12	41	30	G1.5	VC1ADC1SS040-13-30
50	16	51	35	G2	VC1ADC1SS050-15-35

Stainless Steel 316L/1.4404

- Temperature range: -196 to 350 °C

Size (DN)	A (mm)	B (mm)	L (mm)	Thread	Order No
10	12	10	30	G3/8	VC1ADC2SS010-04-30
16	9	9	30	G1/4	VC1ADC2SS016-03-30
16	12	16	30	G1/2	VC1ADC2SS016-05-30
16	12	16	30	G3/8	VC1ADC2SS016-04-30
25	12	16	30	G1/2	VC1ADC2SS025-05-30
25	12	20	30	G3/4	VC1ADC2SS025-07-30
25	12	24	30	G1	VC1ADC2SS025-09-30
40	14	35	30	G1.25	VC1ADC2SS040-11-30
40	12	41	30	G1.5	VC1ADC2SS040-13-30
50	16	51	35	G2	VC1ADC2SS050-15-35