

# ISO-KF Swagelok Adapter

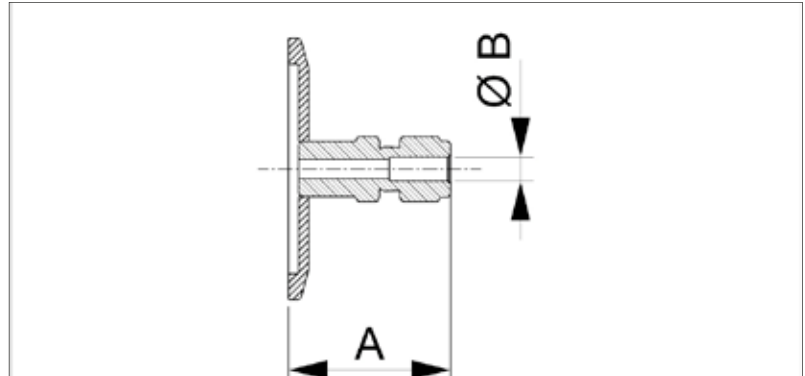


Swagelok® fitting

Pressure range:  $1 \cdot 10^{-8}$  mbar to 500 mbar over pressure (elastomer seal)

$1 \cdot 10^{-9}$  mbar to 500 mbar over pressure (metal seal)

## Dimensions



### Stainless Steel 304/1.4301

- Temperature range: -196 to 300 °C

Size (DN)	A (mm)	B (mm)	Order No
16	40	6 mm	VC1ADL1SS016-M6
16	41	8 mm	VC1ADL1SS016-M8
25	38	6 mm	VC1ADL1SS025-M6
25	39	8 mm	VC1ADL1SS025-M8
25	41	10 mm	VC1ADL1SS025-M10
25	43	12 mm	VC1ADL1SS025-M12
40	38	6 mm	VC1ADL1SS040-M6
16	40	1/4"	VC1ADL1SS016-05
16	53	1/2"	VC1ADL1SS016-03
25	38	1/4"	VC1ADL1SS025-05
25	53	1/2"	VC1ADL1SS025-03
40	38	1/2"	VC1ADL1SS040-05

### Stainless Steel 316L/1.4404

- Temperature range: -196 to 350 °C

Size (DN)	A (mm)	B (mm)	Order No
16	40	6 mm	VC1ADL2SS016-M6
16	41	8 mm	VC1ADL2SS016-M8
25	38	6 mm	VC1ADL2SS025-M6
25	39	8 mm	VC1ADL2SS025-M8
25	41	10 mm	VC1ADL2SS025-M10
25	43	12 mm	VC1ADL2SS025-M12
40	38	6 mm	VC1ADL2SS040-M6
16	40	1/4"	VC1ADL2SS016-05
16	53	1/2"	VC1ADL2SS016-03
25	38	1/4"	VC1ADL2SS025-05
25	53	1/2"	VC1ADL2SS025-03
40	38	1/2"	VC1ADL2SS040-05